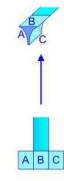
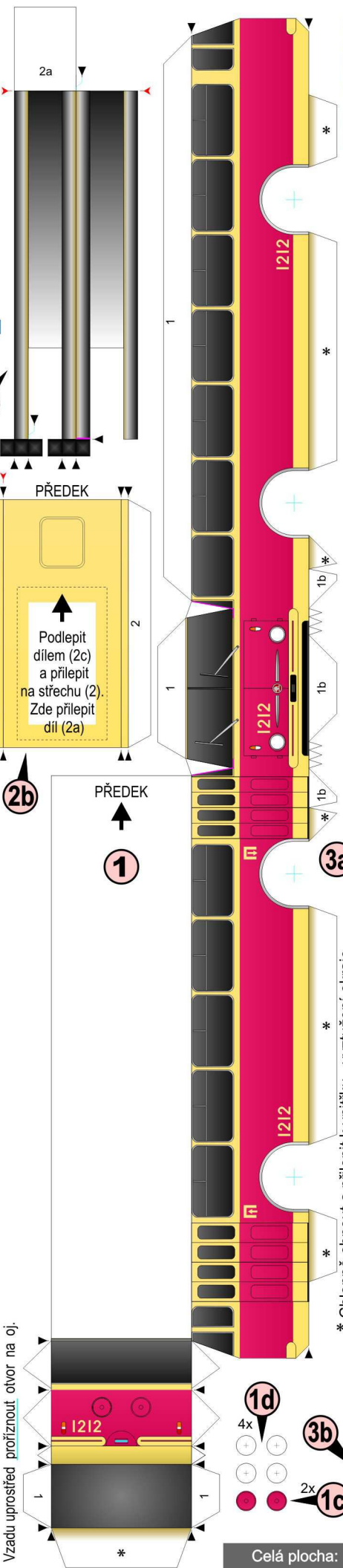
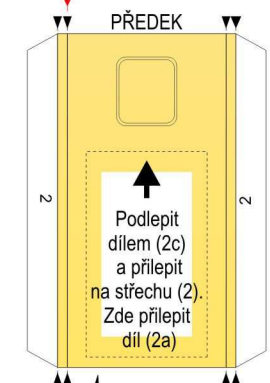


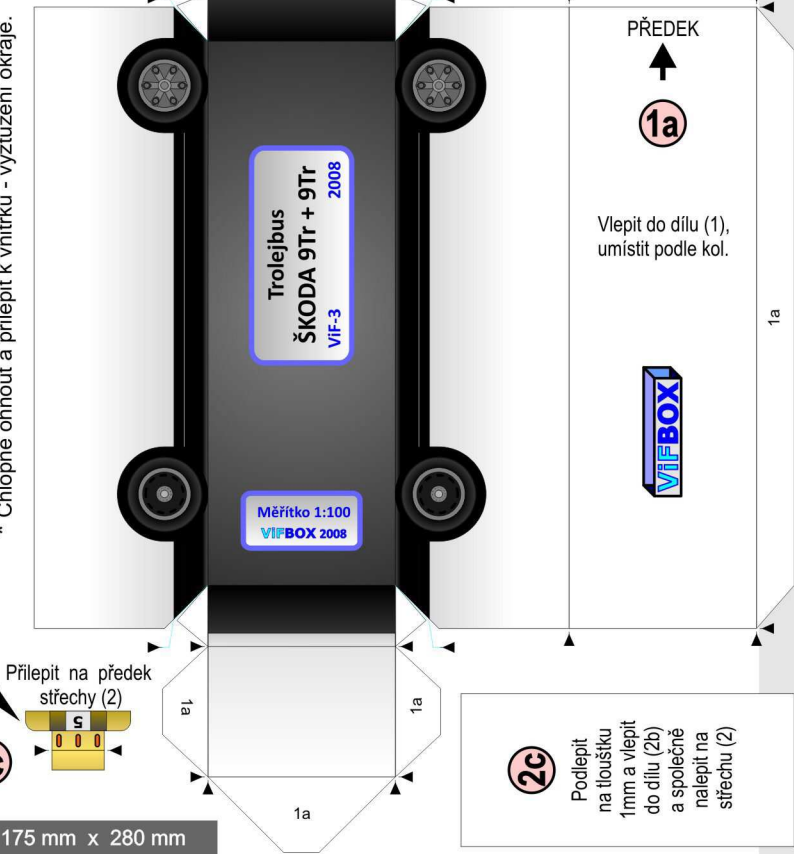
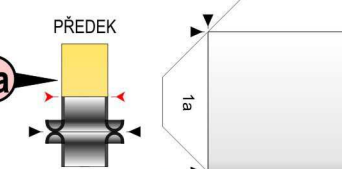
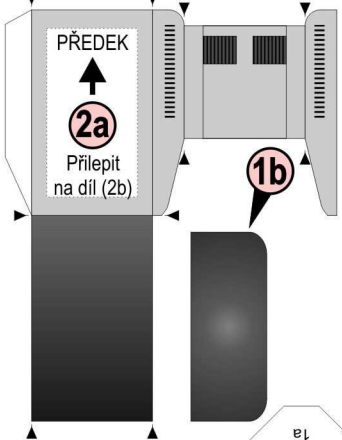
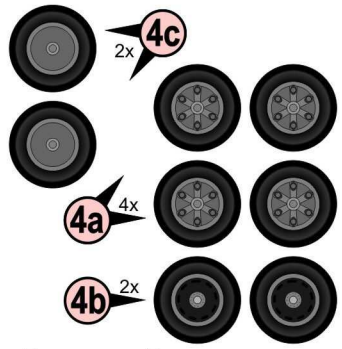
PŘEDNÍ VŮZ



3

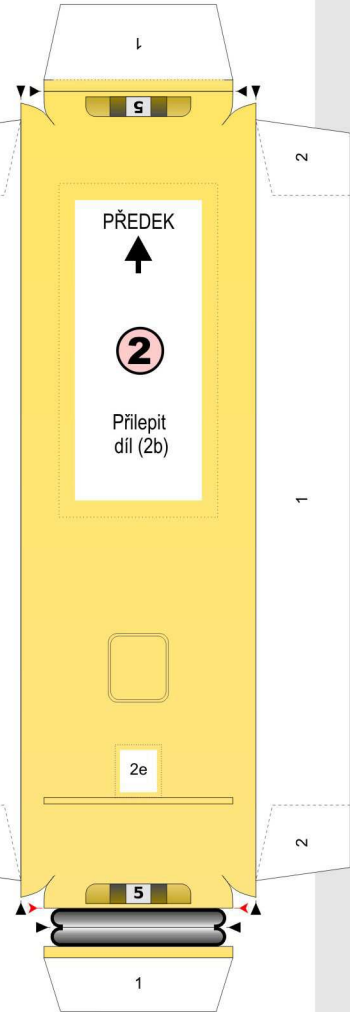


Spojení dvou trolejbusů Škoda 9Tr, Kijev, Ukrajina
[zdroj: transit.parovoz.com]



Tento obdélníček: 50 mm x 5 mm

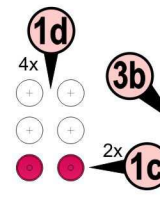
Trolejbusy ŠKODA 9Tr + 9Tr
VIF-3 [2008]



Tento obdélníček: 50 mm x 5 mm

Měřítko: 1:100

Vzadu uprostřed proříznout otvor na oj.



Celá plocha: 175 mm x 280 mm

2c Podlepit na tloušťku na tloušťku 1mm a vlepit do dílu (2b) a společně nalepit na střechu (2)

* Chlopně ohnout a přilepit k vnitřku - vyztužení okraje.